

Renovation
Adaptation

Product line



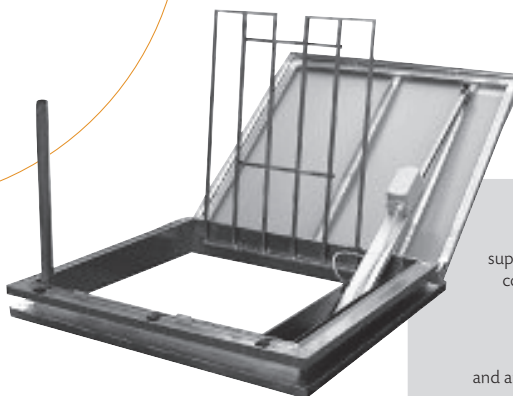
Hexacoif access
Smoke vents range MoE

Design
Supply
Installation

adexsiUK

NSHEV + ROOF ACCESS
Single Flap (Electric)

CE - This smoke vent meets the
European regulation EN 12101-2
in force.



Hexacoif Access MoE (one opening flap)
is designed to fit with all kind of existing
support (concrete, steel, wood...), and can be
controlled by thermofuse and/or electrical
control box.

Equipped in option with a cross bar for
roof access, an adaptation for ladder
and an opening griddle, this skylight also allows
an access to the roof in safety.

Dimensions

Performances

Characteristics

References	DT ⁽¹⁾ l x L in cm	DB ⁽¹⁾ l x L in cm	SGO (Av) in m ²	Lighting surface (SLu) in m ²	Aerodynamic surface (Aa) in m ²			Snow load/Working pressure (bar) ⁽⁴⁾												Total volume of pistons in liters (L)
								MoT				MoE				MoP				
					E (Eco)	S (Standard)	+ (Plus)	PCA ⁽²⁾		CAI/DD ⁽²⁾		PCA ⁽²⁾		CAI/DD ⁽²⁾		PCA ⁽²⁾		CAI/DD ⁽²⁾		
								SL 250 (3)	SL 500 (3)	SL 250 (3)	SL 500 (3)	SL 250 (3)	SL 500 (3)	SL 250 (3)	SL 500 (3)	SL 250 (3)	SL 500 (3)	SL 250 (3)	SL 500 (3)	
C 100 straight	100 x 100	100 x 100	1,00	1,00	0,40			●	●	●	●	4,7A	6,2A	5,2A	6,7A	16	27	16	27	1,70
C 120 straight	120 x 120	120 x 120	1,44	1,44	0,58			●	●	●		5,2A	7,1A	5,7A	7,6A	13	23	13	23	2,11

(1) DT = Dimension Top of upstand (Commercial reference) and DB = Dimension Bottom of upstand (Geometrical area) - (2) PCA = Multilayer polycarbonate panels 10 or 16 mm,
CAI = Insulated aluminium cover and DD = Double Dome - (3) SL 250 (0-400 m of altitude) - SL 500 (400-800 m of altitude and more)

● Available

A clear solution
for smoke control
and ventilation.



The Business Centre, Cardiff House,
Cardiff Road, Vale of Glamorgan, CF63 2AW



(+44) 0845 0840 555



(+44) 0845 0840 556



info@adexsiuk.com

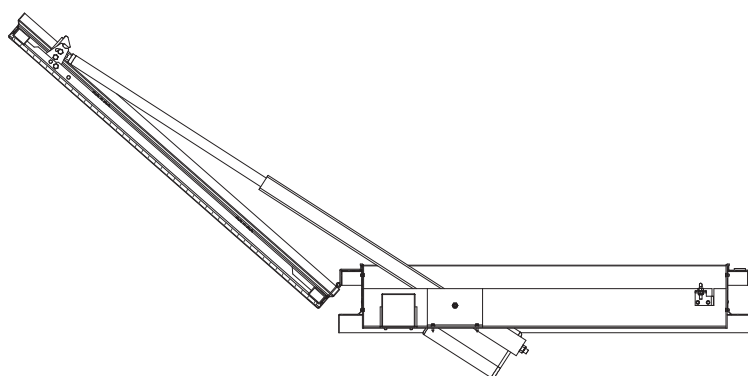
our solutions for
the roof

adexsiUK

Global solutions for lighting,
daily and smoke ventilation

Hexacoif acces MoE

Smoke vents range



Hexacoif MoE Acces in safety position

COMPONENTS:

- A metallic upstand in galvanized steel of 150 mm high, which can be installed on all kind of existing support (concrete, steel, wood...).
- This product also allows to transform the original function of an existing skylight, while conserving the existing upstand.
- An aluminium frame which protects the periphery of dome or PCA.
- A thermofuse pre-installed in the factory (in option).
- One opening flap controlled by thermofuse and/or electrical control box. The opening power is given by a 24V drive integrated in the whole system.

FILLING:

- Our standard:
 - PCA 10 mm 4 skins
- In option:
 - PCA 16 mm 7 skins
 - Double dome in PMMA, polycarbonate or Hexachoc 1200J
 - Insulated aluminium cover

For additional details, see the rubric of the options.

Working	Type B opening + closing
Cycles	Re 10,000 (daily ventilation) + Re 1,000 (smoke extraction)
Snow load	SL 250 or SL 550
Low temperature	T (-15°)
Wind load	WL 1 500 Pa
Resistance to heat	B 300 °C